

Frequently Asked Questions

Does the Project Team have a clear mission from the Town related to the goals of this project?

Through the Educational Visioning process, the School District developed a set of clear educational goals that are driving the project. The purpose of the 5/17/2022 Community Forum and other Community Forums yet to be held are to understand Community goals relative to anticipated public use of the building and site; this will help the School Building Committee make an informed decision about which option best suits both the Educational Program and the needs of the public at-large. A Sustainability Subcommittee is being formed to ensure the project addresses sustainability goals in accordance with Maynard's designation as a Green Community.

Maynard is a Green Community – will GMES strive to be a Net-Zero Energy project? What are the sustainability goals for the project, and what measures will be taken to achieve them (efficient HVAC systems, etc)?

The GMES project will aim to deliver a building that reaches the highest sustainability benchmark that is attainable within the project budget. Each alternative being considered by the Project Team will meet or exceed all requirements of the Stretch Energy Code, which is required on MSBA-funded projects. The project team will elect to certify the project using either the LEED or Mass CHPS rating system, which are used to evaluate high-performance buildings. Efficient HVAC and other building systems will be fully integrated into the design, and every achievable sustainability rating measure/point will be pursued.

Are the proposed play areas shown on the plans intended for School use? Public? Both?

Proposed play areas shown on the plans are intended for both School and Public use. Different site plan alternatives are being evaluated in order to optimize safe and easy access to age-appropriate play spaces for these two user groups.

Will a multi-story option be considered to preserve land/usable site?

Yes. Five of the seven options being studied as part of the Preferred Schematic Report propose a multi-story building configuration.

Green Meadow Building Committee

Jerry Culbert *Chair Community Representative*
Nicholas Kane *Co-Chair Community Representative*
Greg Johnson *Town Administrator*
Brian Hass *School Superintendent, MPS*
Robert Rouleau *Principal, GMES*
Justine St. John *Select Board Member*
Chris DiSilva *Select Board Member*
Mary Brannelly *School Committee Member*
Justin DeMarco *DPW Director*
Wayne White *Business Manager, MPS*
Katie Moore *Finance Committee*
Robert Savoie *Director Of Building Facilities*
Charles Gobron *Special Projects Coordinator*
Jennifer Gaudet *Community Representative*
Anthony Midey *Community Representative*
Mark Anderson *Community Representative*
Matthew Johann *Community Representative*
Ken Neuhauser *Sustainability Committee*

For More Information

Visit us on Facebook @
<https://www.facebook.com/Green-Meadow-MSBA-Project-104657698834049>



Visit us on the Web @
<https://www.maynard.k12.ma.us/o/green-meadow-school/page/gm-building-project-information>



Green Meadow Elementary School Building Project



Project Timeline

Feasibility Study Phase

- Preliminary Design Program (PDP) March 2022
- Preferred Schematic Report (PSR) June 2022

Schematic Design Phase May 2023

Project Approval/Funding Agreements May 2023

Town Meeting and Vote June 2023

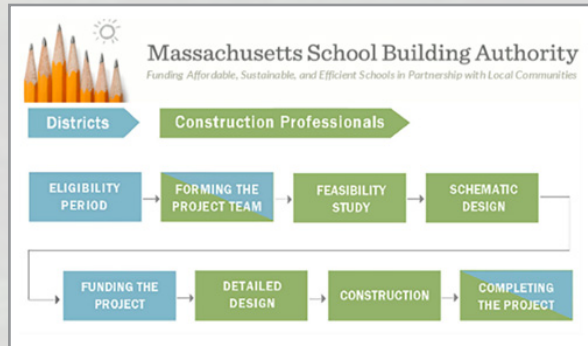
Design Development, Bid Documents and Bid 2024

Construction Completion 2026

Project Completion 2027

The Process

The Town of Maynard was invited to participate with the Massachusetts School Building Authority to conduct a Feasibility Study for the Green Meadow Elementary School in 2021.

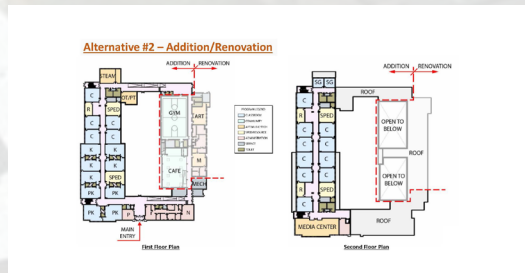
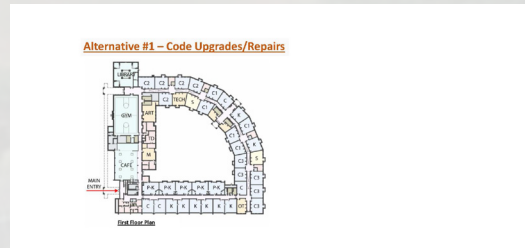


The invitation to the Town is to work with the MSBA to explore potential solutions to the problems that have been identified in the existing Green Meadow Elementary School. In 2021 the Owners Project Manager and Design Team were hired to perform the Feasibility Study.

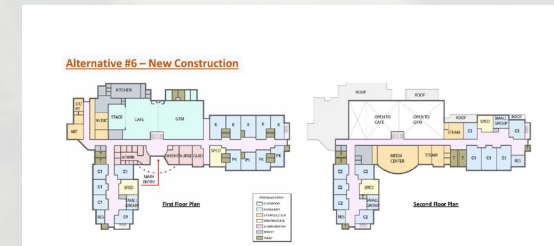
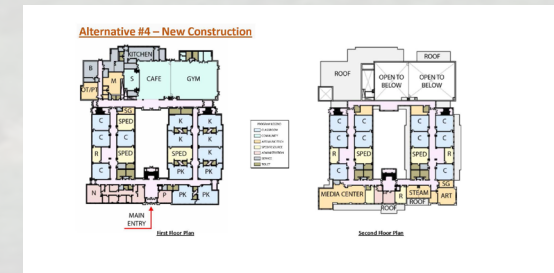
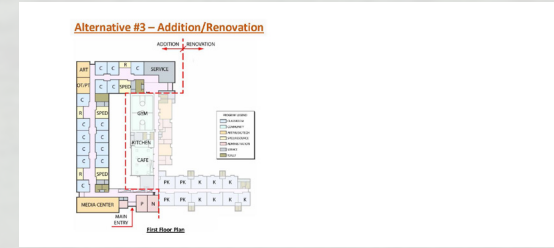
Currently in the Feasibility Study phase, the Design Team has performed a thorough analysis of the existing Green Meadow Elementary School and are in the process of studying several design alternative solutions as part of the MSBA's process. During the Schematic Design Phase, the "Preferred Alternative" Design Solution will be further developed for consideration and securing funding for the Project.

Once the project has been approved by MSBA and funding secured, the Town will vote to approve the project with an anticipated construction start in 2024, with project completion in 2027.

Sample Floor Plans



Sample Floor Plans (cont'd)



Why a New School?

The original existing Green Meadow Elementary School was built in 1955 with additions completed in 1974 and 1988. The existing school is past its useful life and deteriorating conditions affect teachers, staff and students. Some of the notable deficiencies include:

- The current building does not meet the educational program requirements.
- Undersized classrooms are overcrowded.
- Building has many ADA compliance and accessibility issues.
- Obsolete mechanical and lighting systems are expensive to operate.
- Inefficient windows, doors and walls increase energy costs.
- Inadequate parking and drop-off areas for cars and buses.

These conditions are detrimental to those that use the building and are costing the Town money in both operations and maintenance.