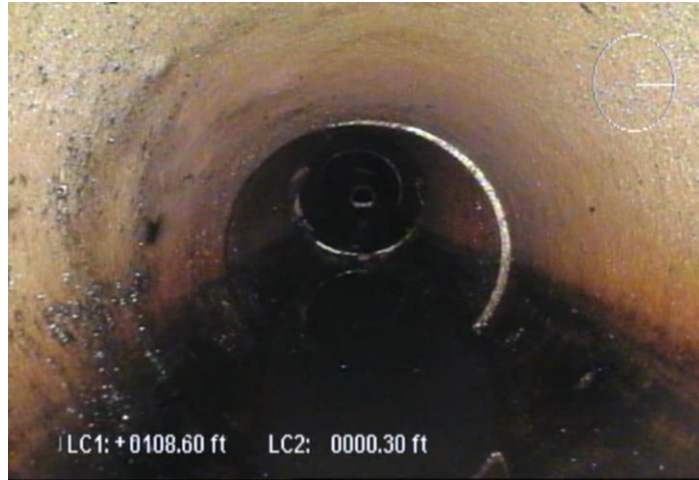


**TOWN OF MAYNARD, MA**  
**POWDERMILL ROAD – SEWER EVALUATION**  
**OBSERVED DEFECTS**



SMH 1 (B11) to SMH 2 (B11A) – Sta. 108.6'

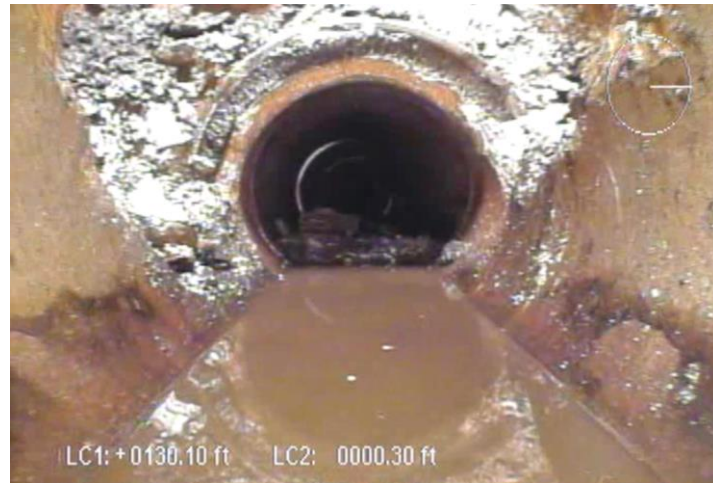


SMH 1 (B11) to SMH 2 (B11A) – Sta. 111.3'

**TOWN OF MAYNARD, MA**  
**POWDERMILL ROAD – SEWER EVALUATION**  
**OBSERVED DEFECTS**

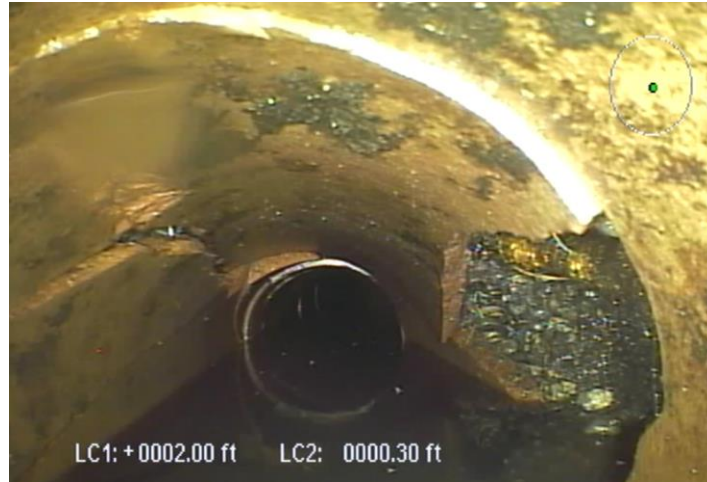


SMH 1 (B11) to SMH 2 (B11A) – Sta. 111.9'



SMH 1 (B11) to SMH 2 (B11A) – Sta. 130.1'

TOWN OF MAYNARD, MA  
POWDERMILL ROAD – SEWER EVALUATION  
OBSERVED DEFECTS



SMH 9 (B6) to SMH 10 (B5) – Sta. 2.0'

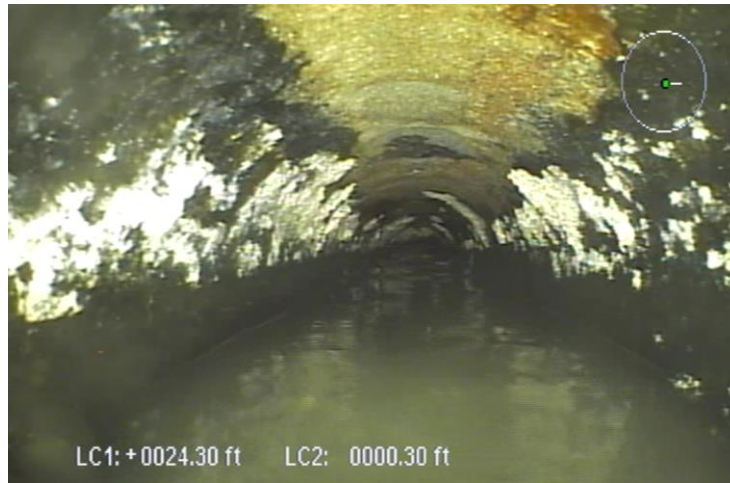


SMH 9 (B6) to SMH 10 (B5) – Sta. 2.0'

**TOWN OF MAYNARD, MA**  
**POWDERMILL ROAD – SEWER EVALUATION**  
**OBSERVED DEFECTS**



SMH 14 (2A) to Pump Station – Sta. 4.4'



SMH 14 (2A) to Pump Station – Sta. 24.3'